

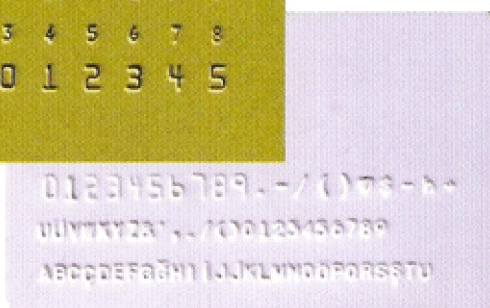
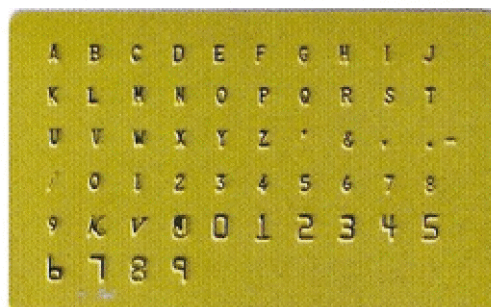
PVC

MANUAL EMBOSSER FOR PVC CARDS



MANUAL EMBOSSING MACHINE

USER GUIDE



0123456789

Product Introduction

Manual embosser is used to emboss alphabetical letters, numerals and symbols on the surface of the PVC card to make it to be identified uniquely. Compared to automatic embossers, it is low-cost, easy to use and ideal for different types of card issuing companies and businesses.

Ecard PVC manual embosser is a perfect product for personalization of ATM cards, VIP cards, loyalty cards, membership cards, and other embossing jobs. The machine has a daisy characters plate which offers ISO standard characters, numerals and symbols. The two pitches allow embossing small/large font size. The embossing quality is equal to any of the electronic machine.

Main Specification

1. Characters Selector: Daisy characters plate
2. Standard Characters:

26 Letters:

A B C D E F J H I J K L M N

O P Q R S T U V W X Y Z

20 Numerals:

0 , 1 , 2 , 3 , 4 , 5 , 6 , 7 , 8 , 9

0 , 1 , 2 , 3 , 4 , 5 , 6 , 7 , 8 , 9

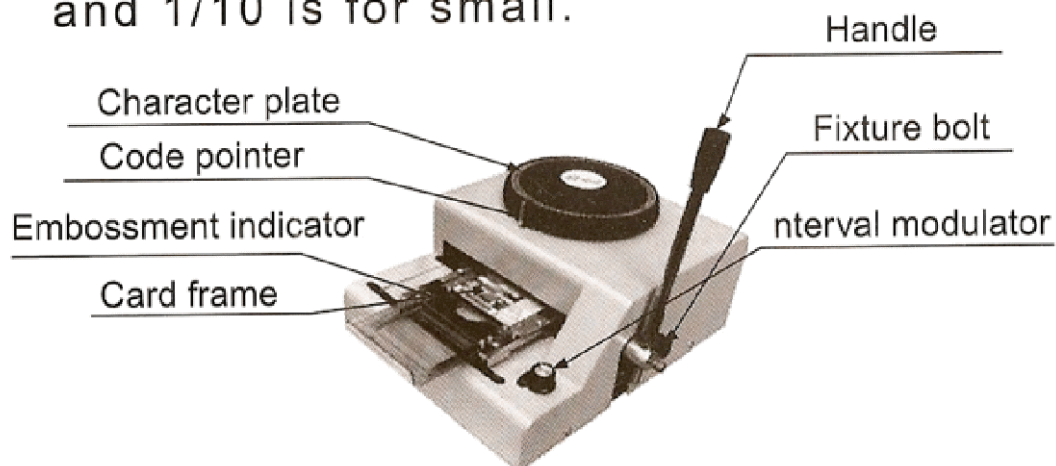
Special Symbols:

. - /

3. Characters: All characters correspond to ISO Standard
4. Embossment Pitch: 1/7inch or 1/10inch
5. Operation: Manual
6. Embossment Line: 1-11 Lines
7. Embossment Indicator: Pin point and sample card
8. Dimensions (L×D×H): 339×269×165 (mm)
9. Weight: 8.8 kg

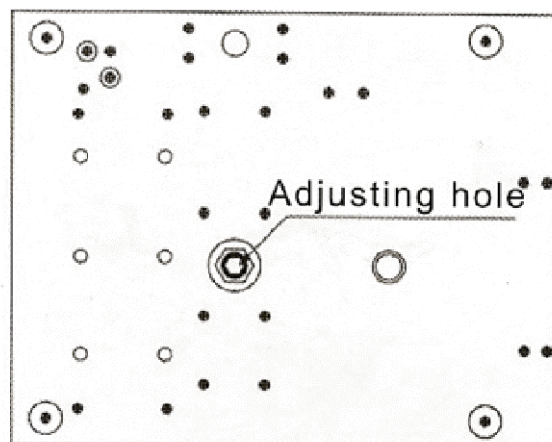
Installation and Structure

1. Insert the handle into the hole of axis on the right of the machine; and screw the fixture bolt.
2. Pull out the card frame completely, place the card in the upper portion of the frame and fix the card firmly inside the frame.
3. The card frame can be moved up and down and right. Use the embossment indicator to identify the position of the current character.
4. You can use interval modulator to adjust embossment pitch, 1/7 is for big letters and 1/10 is for small.



Operating Steps

1. Put the card in the card frame and fix it firmly.
2. Use the embossment indicator as baseline to adjust the frame to the desired position.
3. Turn the daisy plate to the position of the desired character.
4. Push down the handle to emboss the character and release the handle after embossing.
5. Repeat step 2-4 to emboss multiple characters.
6. Note that the embossment depth is adjustable through the hole on the bottom of the machine. First use the 4th inner hexagon spanner to untie the bolt, and then use the 8th outer hexagon spanner to turn the outer bolt. After adjusting, please screw the inner bolt tightly.



Attentions

1. Please use standard PVC card (credit card size). Metal or non-standard cards may damage the machine.
2. Do NOT push the handle when moving the daisy character plate.
3. Use the correct pitch based on the size of the character to emboss.
4. Do NOT put hand and other hard objects into the machine.
5. Please move the card frame to the left end when not using the machine.
6. If embossment depth needs to be adjusted, do it with caution. Over-adjusting may damage the machine.

